



# Mahani Electric Co., Ltd.

---

Make your life smart & safe

2025

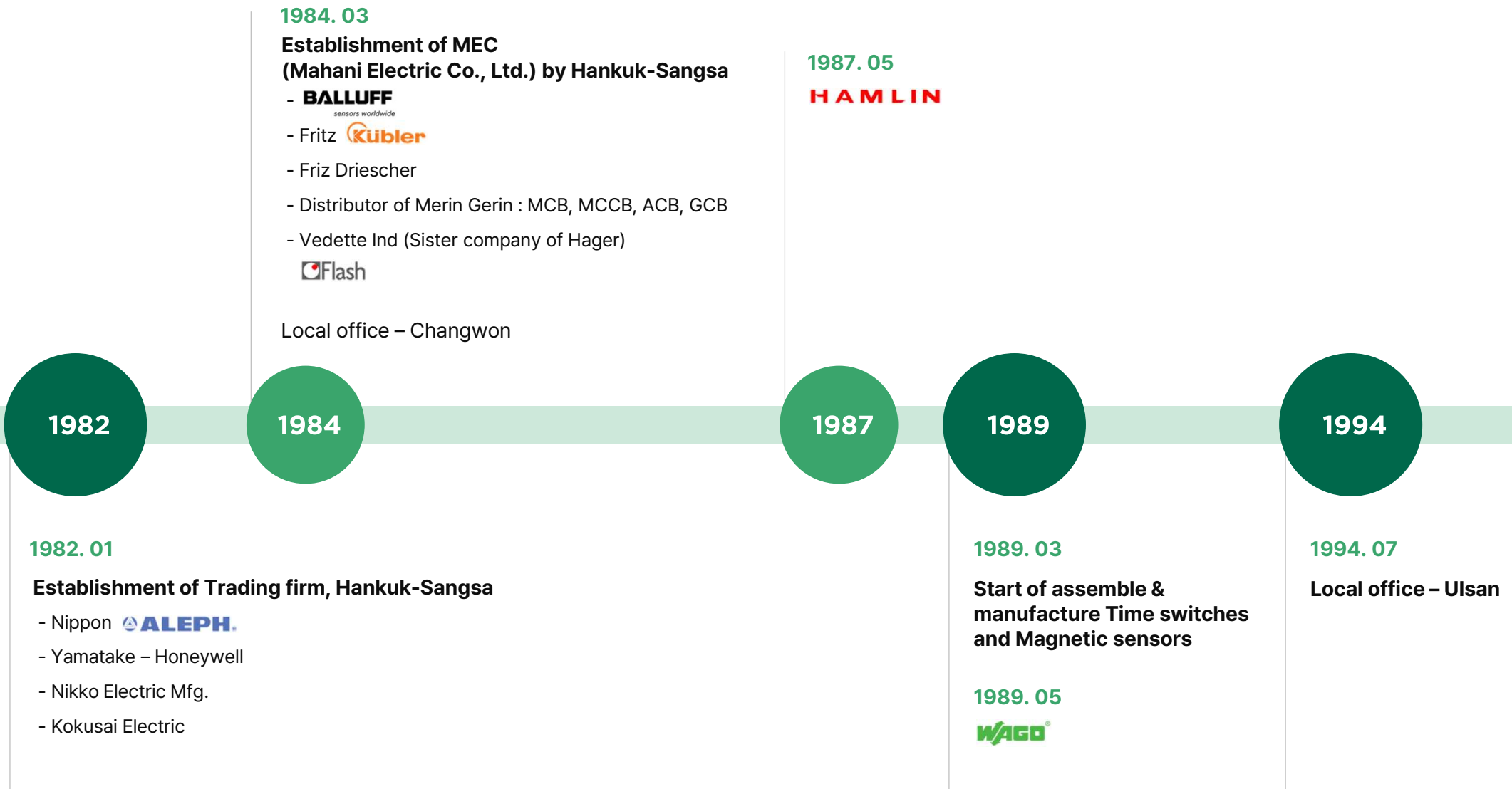
Copyright Mahani Electric Co., All Rights Reserved

**MEC**



# Company History 1982 ~ 1994

**MEC**



# Company History 1995 ~ 2014

**MEC**

**microsonic**

**2005. 05**

Establish a sister company,  
**MEC (주)엠이시 시스템**  
MEC SYSTECH CO., LTD.  
Establish a factory in China

**2005. 09**

Local office  
– Daegu/  
**MIDDEX ELECTRONIC**  
BROKEN TOOL MONITORING  
MOTOR DRIVERS  
CUSTOMER SOLUTIONS

**2009**

**PMA**  
Cable Protection

**PFLITSCH**

**2009. 06**

Official Partner of  
**HARTING**  
Pushing Performance

**2013. 03**

Local office – Suncheon

**2013**

**CAPTRON**  
Sensortechnologie

**1995**

**SCHMERSAL**  
Safe solutions for your industry

**2000**

**2003**

**2003. 01**

Local office – Daejeon

**2003. 11**

Acquired ISO 9001

**2005**

**2009**

**HMS**

**2012**

**2013**

**2014**

**2014. 02**

**DEHN**

**2014. 05**

Local office – Pyeongtaek

**2014. 06**

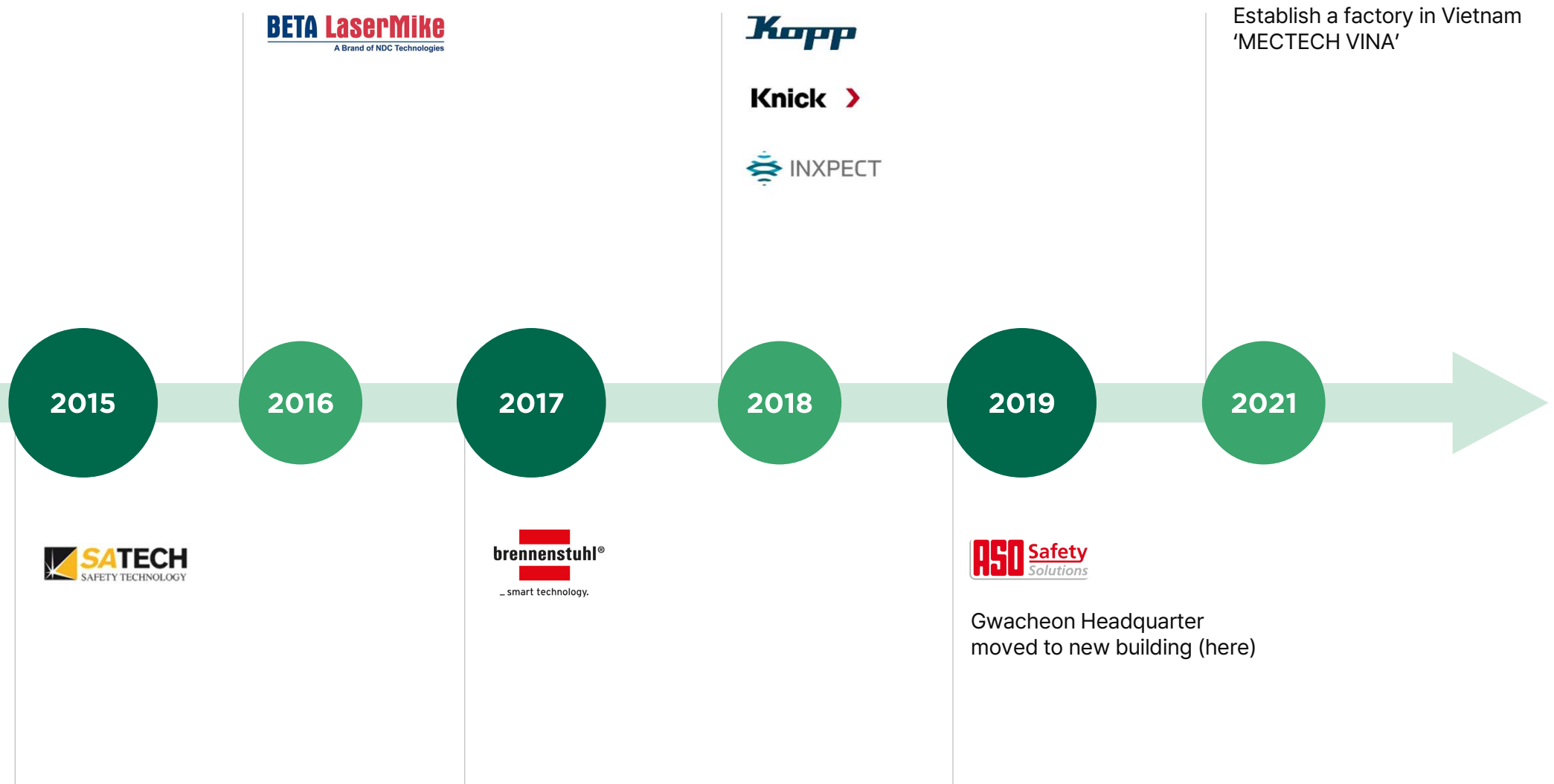
**wieland**

**2014. 11**

Gwacheon Headquarter  
(moved from Seoul)

# Company History 2015~

**MEC**



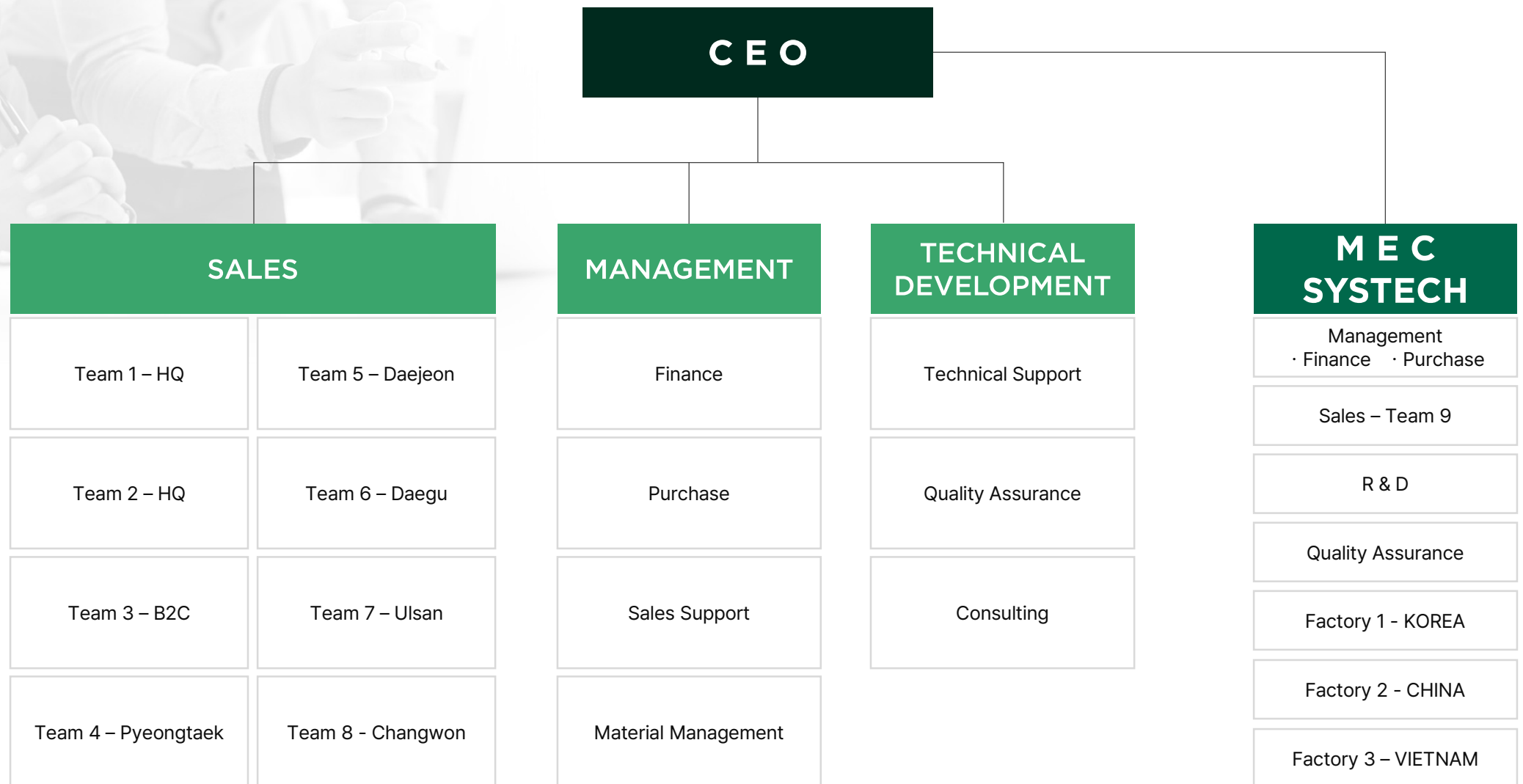


## Ho-Sik Park 1946~

- ✓ Born in 1946
- ✓ Born in Seoul, South Korea
- ✓ Graduated from Dankuk University
- ✓ Major: Chemistry
- ✓ Military: Navy service
- ✓ Experience: Second-class engineer for ship
- ✓ Founded Korea Trading Company in 1982
- ✓ Founded MEC company in 1984
- ✓ Children: Two daughters and one son.

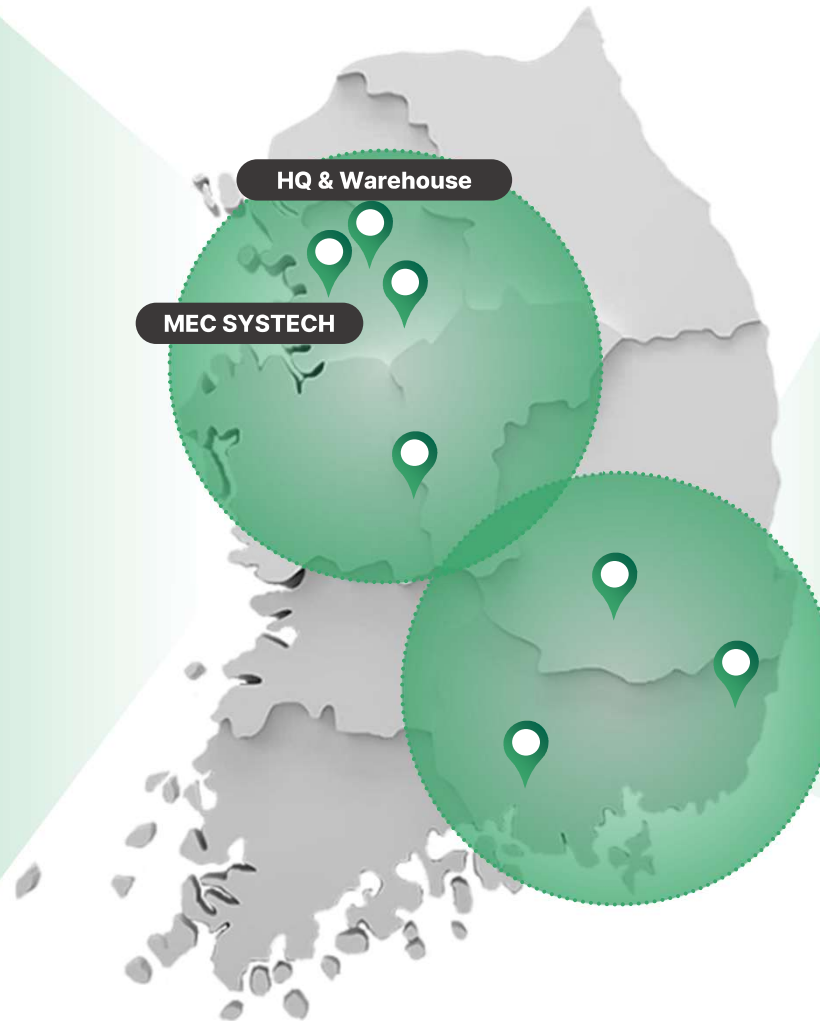
# Organization

**MEC**



# Regional Office

**MEC**





# Organization - sales

**MEC**

## Sales Division 1

CEO

**Manny Park**

**Director  
Duckhee Park**

Team 1&2 – HQ  
(HeadCount:7)

Team 3 (HC:3)  
B2C - HQ

Team 4 (HC:3)  
Pyeongtaek

Team 5 (HC:4)  
Daejeon

Technical Development Team – HQ (HC:2)

**Director  
Chan-yong Sung**

Team 6 (HC:6)  
Daegu

Team 7 (HC:5)  
Ulsan

Team 8 (HC:6)  
Changwon

## Sales Division 2

CEO

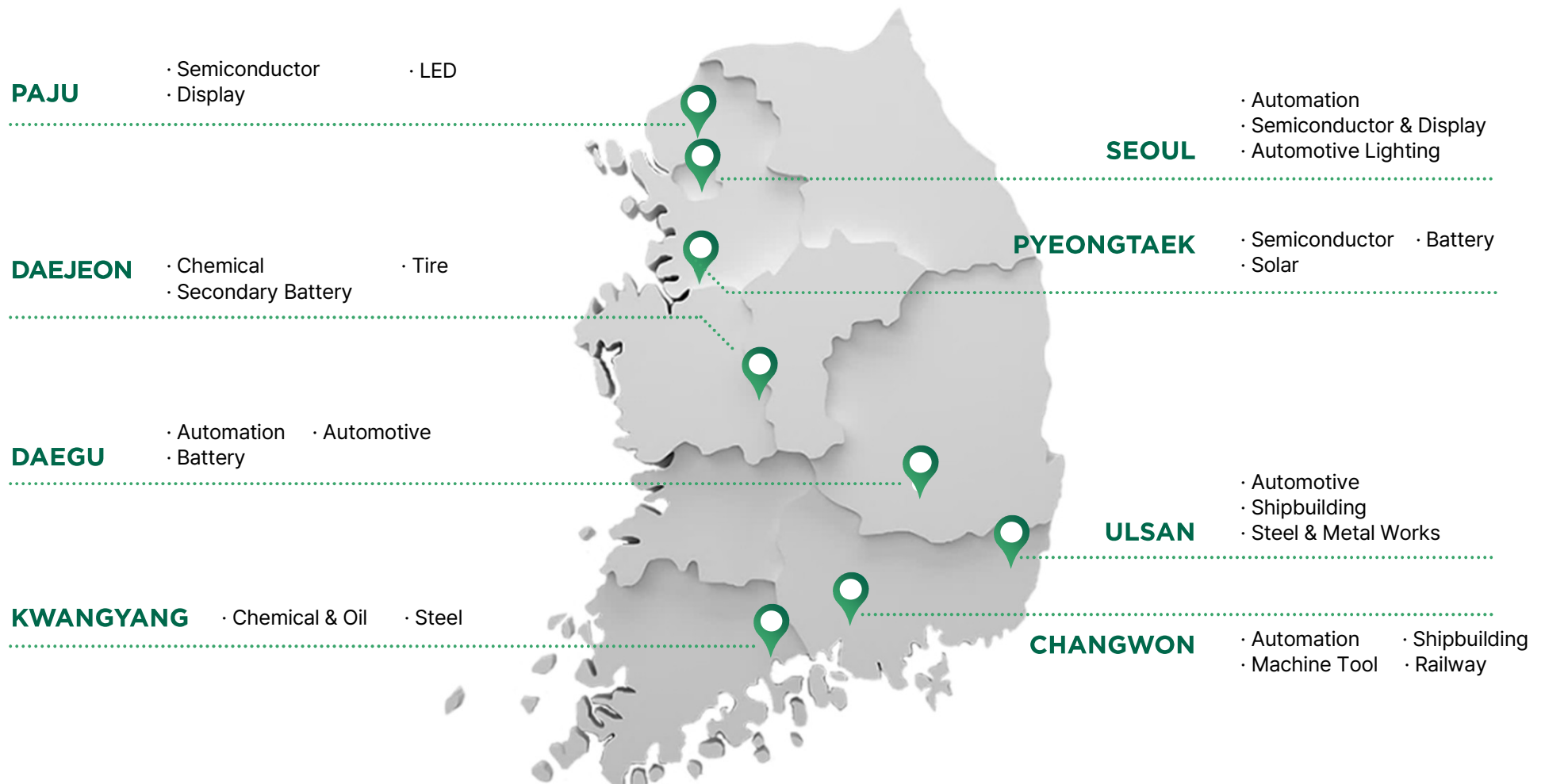
**Da-eun Park**

Team 9  
(OEM / HC:5)



# Key Segment

MEC



## Core Markets

- ✓ Automotive
- ✓ Shipbuilding, Railway

- ✓ Semiconductor, LED & Display
- ✓ Machine Tool & Automation

- ✓ Steel & Metal Works
- ✓ Elevator
- ✓ Battery

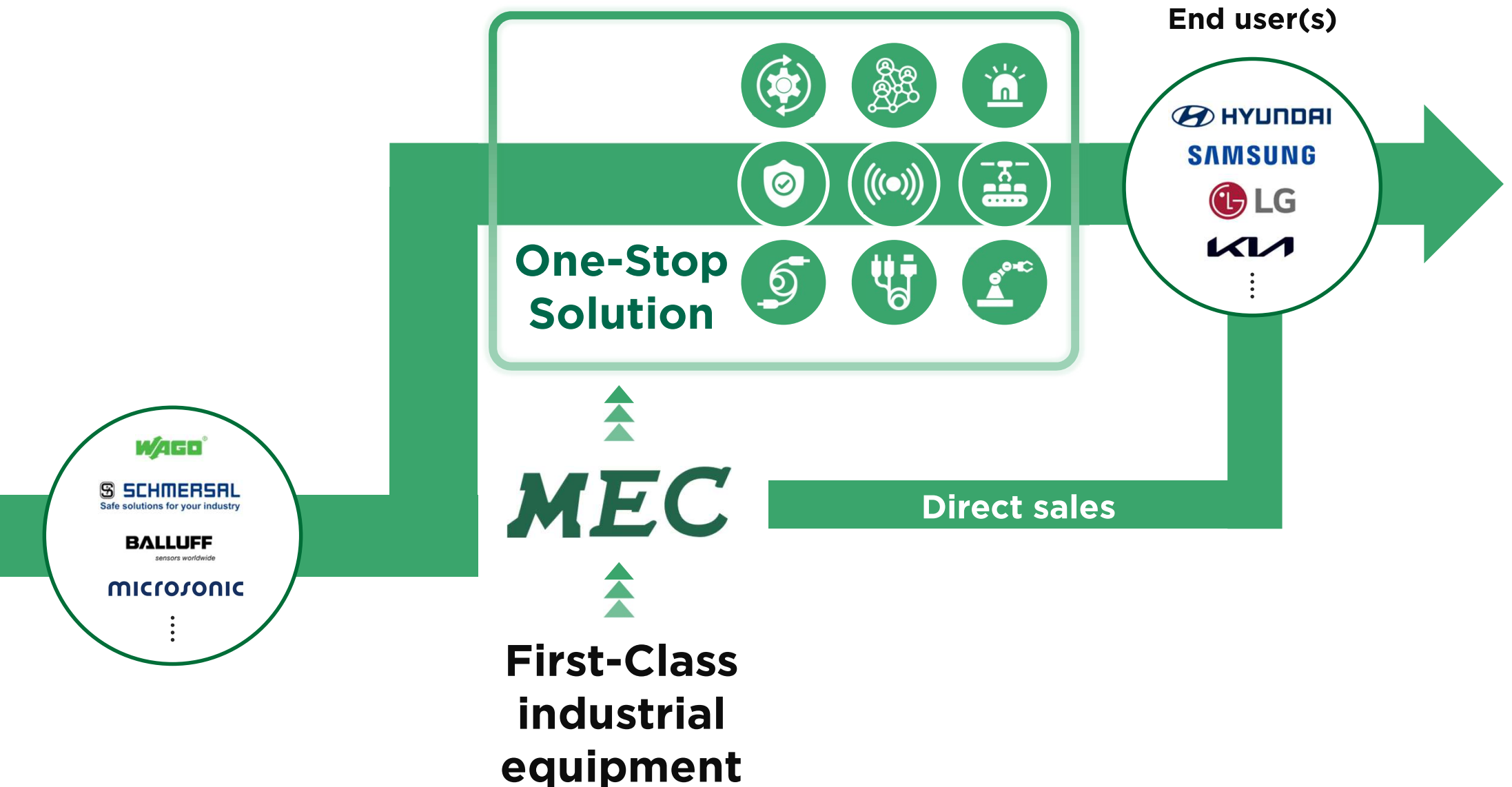
# Warehouse & Assembly Line in Anyang

*MEC*



# MISSION & CORE COMPETENCE

**MEC**







## Major Accounts

- HYUNDAI Motors Group
- KIA Corp
- GM-Korea



## Success Projects

- RFID, IO-LINK with Sensors & Connectivity (Balluff)
- Safety system (INXPECT, SCHMERSAL, Wieland)
- Interconnection system (WAGO)
- Cable protection system (PMA)
- Cable gland (PFLITSCH)
- Remote power & signal (B&PLUS)



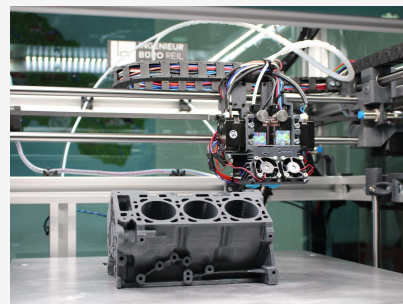
## Subcontractors

### Part Makers (TIER1)

- HYUNDAI TRANSYS
- HYUNDAI Mobis
- MANDO
- AJIN Industry
- HCC(Halla)

### Line Builders

- HYUNDAI Motors (Automation Eng. Div.)
- HYUNDAI-WIA
- Hanwha Tech-M
- Insung
- Soosung
- Wooshin
- Guedel Korea



# Automotive Projects (Domestic)

**MEC**

	HMC					KMC		HYUNDAI WIA
City	Asan	Ulsan	Ulsan	Ulsan	Ulsan	Gwangmyeong	Hwasung	Seosan
Project	Body Shop	LAMDA Engine	2Factory Body Shop	CAPPA Engine	EV Factory Body Shop	Body Shop	Body Shop	THETA Engine
Capacity	300K / y	50K / y	200~260K / y	50K / y	200K / y	300K / y	300K / y	200K / y

	HYUNDAI MOBIS		HYUNDAI MSEAT	DAS	HANKOOK TIRE	MANDO	HL Green Power
City	Chungju	Pyeongtaek	Asan	Kyungju	Daejeon	Pyeongtaek	Chungju
Project	MOTOR	MOTOR	Seat Production line	Seat Production line	Line revamping	ABS, Injector, Caliper	Battery pack
Capacity	16K / y	16K / y					

# Automotive Projects (Overseas)

**MEC**

	HMB	HWTO	HMMI	HMGMA	HYUNDAI MOBIS	HYUNDAI KEFICO
<b>City</b>	Piracicaba BRAZIL	Guangzhou CHINA	Bekasi INDONESIA	Savannah USA	Savannah USA	HaiDuong VIETNAM
<b>Project</b>	CAPPA Engine	Hydrogen Fuel Cell	Body Shop	Body Shop	Motor	Injector, Oxygen sensor
<b>Capacity</b>	150K / y	6.5K / y	300K / y	300K / y	10K / y	

	HYUNDAI WIA	SGM	BAIC	NEXEN TIRE	MANDO		
<b>City</b>	Monterrey MEXICO	Shanghai CHINA	Beijing CHINA	Ostrava Czech	Beijing CHINA	Chennai INDIA	Limeira BRAZIL
<b>Project</b>	GAMMA Engine	Small Gasoline Engine	Complete car	New Factory	Rotary injection, Caliper	ABS	ABS
<b>Capacity</b>	300K / y	250K / y	200K / y				



## Major Accounts

- Assembly
- Packaging
- Steel and Foundries
- Fluid
- Robotics
- Presses
- Rubber and Plastics
- Bottling
- Chemical
- Wood working
- Elevators
- Others



## Success Projects

- RFID, IO-LINK with sensors & Connectivity (BALLUFF)
- Interconnection system (WAGO)
- Electrical connection (Wieland)
- Cable protection system (PMA)
- Cable gland (PFLITSCH)
- Safety Radar sensor (INXPECT)





# Traction & Signal

MEC



## Major Accounts

### Traction

- Hyundai ROTEM
- Dawonsys
- Woojin Industry

### Signal

- Shalom ENG
- Seowoo
- Shinwoo ENG



## Subcontractors

- W.R Electric
- Samwon FA
- Maintrans
- Y.J Solution
- D.H Electronic
- Inter-M
- O.S Electric



## Success Projects

- Terminal Blocks & Interface Modules (WAGO)
- Electrical connection (HARTING/Wieland)
- Cable protection system (PMA)
- Cable gland (PFLITSCH)
- DC-switch for Door system (MEC)



# Railway Project(s)

Company	Type	Project	Cars	Note
Rotem	Tram	Poland Warsaw	575	Additional order for 50 train scheduled
Rotem	EMU	USA MBTA	80	Order completed
Rotem	EMU	Taiwan TRA	520	Order completed
Rotem	EMU	Seoul Line 9	48	Order completed
Rotem	EMU	Australia sydney	610	In supply
Rotem	EMU	Singapore train	186	In supply
Rotem	EMU	Daegu Metropolitan Railway	18	In supply
Rotem	EMU	Busan Line 1	48	In supply
Rotem	Tram	Hydrogen electric tram	3	In supply
Rotem	Tram	Canada edmonton	40	Quote in progress
Rotem	EMU	Chuncheon~Sokcho semi-high-speed train	72	In supply
Rotem	Tram	Daejeon Line 2	190	Bidding
Rotem	EMU	Australia Queensland	390	Quote in progress

# Railway Project(s)

**MEC**

Company	Type	Project	Cars	Note
Woojin	EMU	Busan Line 1	200	In supply
Woojin	EMU	Korail	448	In supply

Company	Type	Project	Cars	Note
Dawonsys	EMU	EMU150(1st)	150	Order completed
Dawonsys	EMU	EMU150(2nd)	208	In supply
Dawonsys	EMU	Indonesia		Order completed
Dawonsys	EMU	Seoul Line 4	210	In supply
Dawonsys	EMU	Seoul line5,8	298	In supply
Dawonsys	EMU	Sinansan line	87	Quote in progress

# Shipbuilding

MEC



## Major Accounts

- HD KOREA Shipbuilding & OFFSHORE Engineering
- SAMSUNG Heavy industry
- Hanwha Ocean
- HJ Heavy industry
- STX



## Subcontractors

- |                    |                    |
|--------------------|--------------------|
| • Woojoo Electric  | • Heesco           |
| • Kumho Electric   | • Mecsán           |
| • Myungil Electric | • E-Tech           |
| • Daeyoung Ind.    | • Woosung Electric |
| • Ko-Line          | • KTE              |
| • Yoomyung Eng     | • KOVAL            |
|                    | • Hiair KOREA      |



## Success Projects

- Interconnection & Electronic Interface (WAGO)
- AMS(Alarm Monitoring System) (WAGO I/O)
- Safety System (SCHMERSAL & steute)
- Cable protection system (PMA)
- Electrical connection (HARTING)
- Cable gland (PFLITSCH)





# Semiconductor & Display & Battery

MEC



## Major Accounts

- SAMSUNG Electronics, SAMSUNG SDI
- SK hynix, SK ON
- LG Display
- LG Chemical
- LG Energy Solution



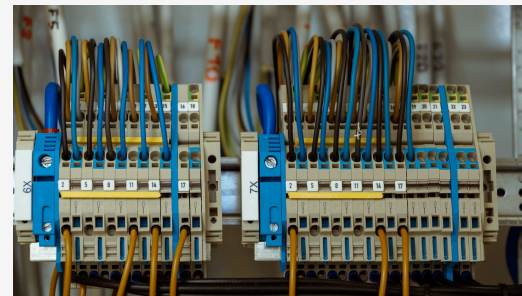
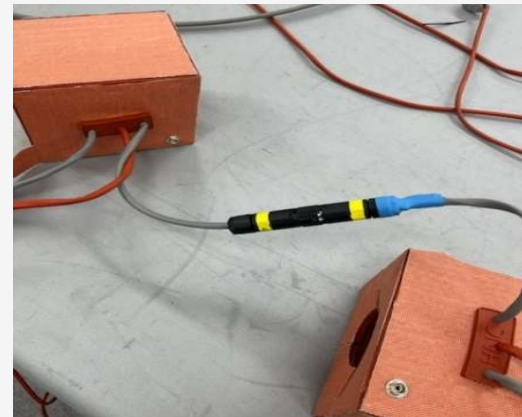
## Subcontractors

- Sunic System
- SEMES
- Toptec
- JPS
- SFA
- WONIK IPS
- Line Technics
- New Power Plasma



## Success Projects

- PC Based FieldBus I/O Control (WAGO)
- Safety System & Interlocking Devices (SCHMERSAL)
- Vacuum Photo Sensor & Fork Sensor (BALLUFF-STM)
- Gateway/Communicator (HMS)
- Ultrasonic double sheet detection sensor(Microsonic)
- Electrical connection / EX (Wieland)



# Elevator

**MEC**



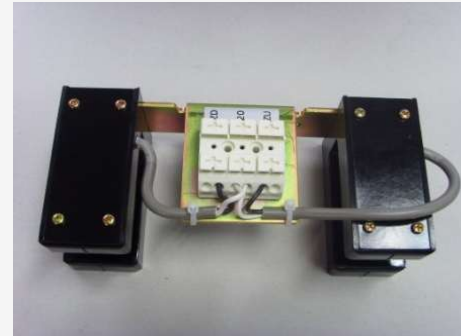
## Major Accounts

- HYUNDAI Elevator
- Otis Elevator
- Mitsubishi Korea
- Thyssen Krupp
- Ushio Korea



## Success Projects

- MEC Magnet sensor (OEM)
- Safety Interlocking Devices (Schmersal)
- Interconnection system (WAGO)
- PSD Door System (BALLUFF)
- EX Position sensor (STEUTE, SCHMERSAL)





## Major Accounts

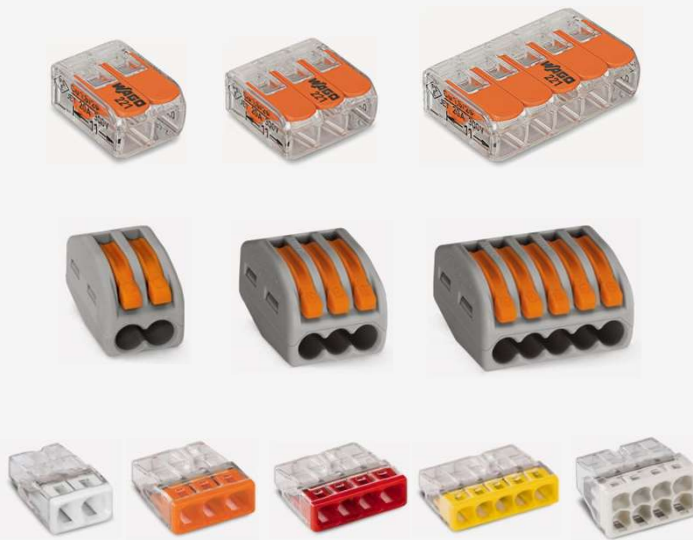
- Compuzone
- Ilshine Vitson
- Auto &
- Distributors by region



## Success Projects

### Through local distributors to Wholesale market

- MEC's Time switch
- MEC's Security Alarm magnet switch
- Push Wire Connectors (WAGO)
- Outdoor/Indoor Connectors (Wieland)





# Other Segment

MEC



## Major Accounts

### Heavy Industries

- HYUNDAI Heavy Industry
- DOOSAN Heavy Industry
- SAMSUNG Heavy Industry

### Steel Industry

- POSCO
- HYUNDAI Steel

### Tire Industry

- Hankook Tire & Technology
- KUMHO TIRE



## Success Projects

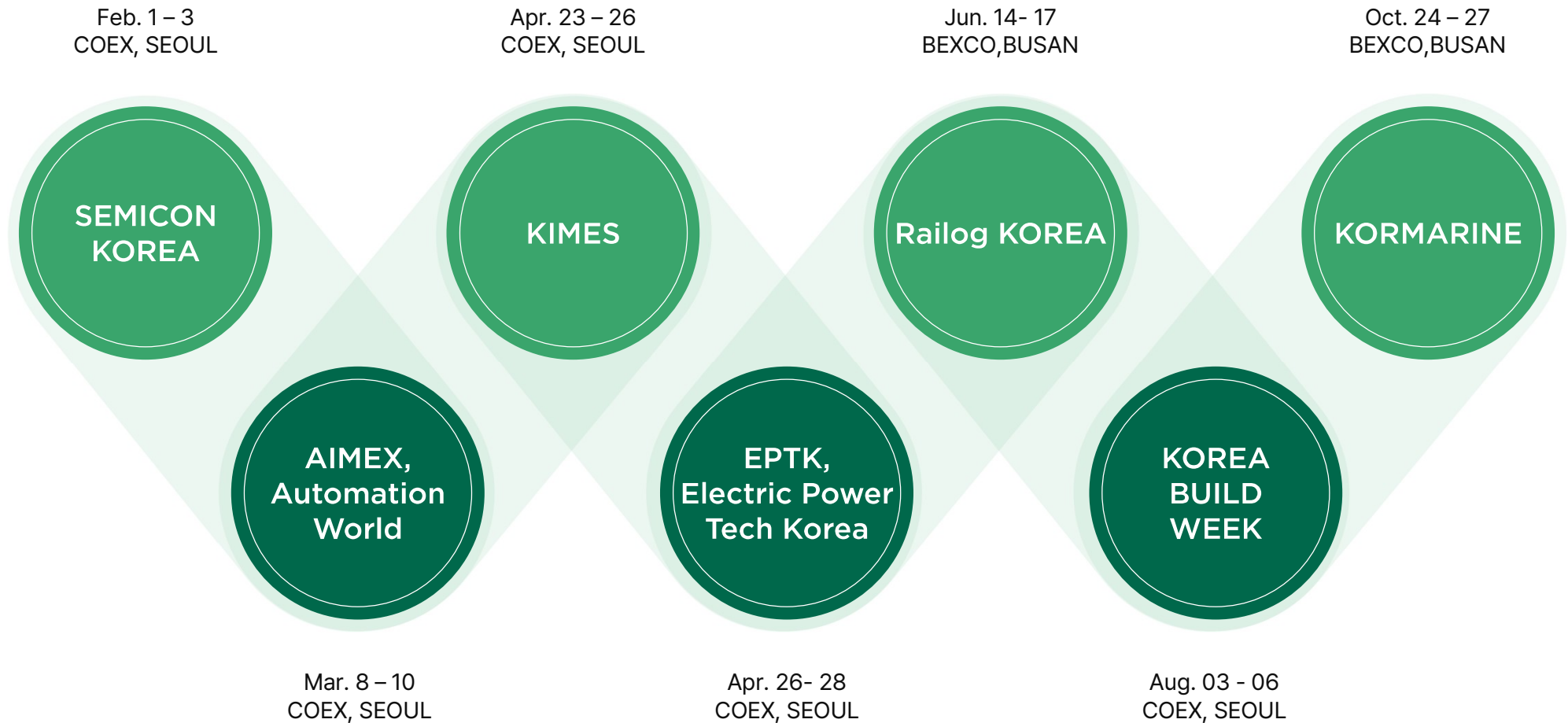
- Linear Transducer & Inductive sensor (BALLUFF)
- Safety interlocking devices (SCHMERSAL)
- Terminal Block (Wieland)
- Interconnection and Fieldbus I/O (WAGO)
- Ultrasonic sensor (Microsonic)





# Exhibition for 2023

**MEC**



# Exhibition for 2024

**MEC**

## SEMICON KOREA

- **Period:** Jan. 31 – Feb. 2
- **Place:** COEX, SEOUL

## KIMES

- **Period:** Mar. 14 – 17
- **Place:** COEX, SEOUL

## AIMEX, Automation World

- **Period:** Mar. 27 – 29
- **Place:** COEX, SEOUL

## Korea Build Week

- **Period:** Jul. 31 – Aug. 3
- **Place:** COEX, SEOUL

## Offshore Korea

- **Period:** Oct. 16 – 18
- **Place:** BEXCO, BUSAN

---

**Thank you for  
your attention!**

---

***MEC***

